



## Quality Crafted Massage Equipment 2025 Catalog



Classic Series Pro Electric  
Table, Towel Warmer and 6  
Quart Stone Heater  
Creme de la Creme, Texas

*A touch above the rest*

CustomCraftworks.com | 800.627.2387



## Table of Contents

Electric Massage Tables ..... 3

Portable Massage Tables ..... 10

Stationary Tables ..... 21

Spa Series ..... 24

Accessories ..... 28

School Programs ..... 33

# A touch above the rest

## Why choose Custom Craftworks?

Custom Craftworks has a long standing reputation for building thoughtfully constructed, long-lasting products. The company was acquired by Pivotal Health Solutions in 2009, and has been crafting high-quality massage tables since 1986. Custom Craftworks has proven to be one of the top brands for massage and spa equipment in the industry. We constantly move forward and improve, striving to deliver unmatched value to our customers in product, service and performance.

## Everyone talks about quality we deliver it...

Thoughtfully created, our engineers design our products with input from industry experts and professionals so each product meets the ergonomic needs of therapists and comfort requirements of clients. Our skilled craftsmen and women build these products from materials constructed to withstand the conditions that massage and treatment techniques require. Our products are continually being updated to adapt to changing needs and better serve the massage community. We are customer driven in all we do and strive daily to enhance and improve their experience with us.



**PRODUCT  
DATA SHEETS**  
now available for  
every product.  
Look for them on each  
product page.



CustomCraftworks.com | 800.627.2387





*What comes standard  
with each Classic Series  
Electric Table*

#### **Basic**

Dual Action Face Rest,  
Crescent Pillow

#### **Lift Back**

Dual Action Face Rest, Crescent  
Pillow, Holes for Swivel Side  
Arm Supports

#### **Deluxe**

Dual Action Face Rest, Salon Head  
& Neck Pillow, Side Arm Holes and  
Swivel Side Arm Supports



Table base branding options on all Hands  
Free Tables

*Electric Massage Tables*



# Classic Series

**Basic - Thera-P**

**Lift Back - TThera-P**

**Deluxe - SThera-P**

## Standard Features:

- **Lifting capacity:** 650 lbs.
- 30" or 33"W x 73"L x 17-35"H
- Hands free dual foot bar control
- 3" Deluxe wrap foam
- 9" on center dual-end accessory ports
- Whisper quiet lift system
- Durable precision cut steel base with caster system



**Table is ADA compliant**

(Consult your tax professional about eligibility for a Section 44 ADA Tax Credit)

# Hands Free Electric Table

The Classic Series Hands Free Electric Table allows therapists to easily control the height of the table with the hands-free dual foot bar control that is built-in along both bottom sides of the table. Because of the table's design and functionality, therapists can move freely around the table without losing contact with their client.

## What people are saying about this best seller...

"The only tables I will buy in the future! I have purchased 3 of the Hands Free models for my practice over the past couple years. The fact that you can raise and lower the table while standing anywhere around it is a big deal when your hands are always on the client. I have less fatigue, my back pain is gone and my clients comment on how professional they are! I also love it for its convenience for the elderly and those with accessibility concerns. BEST tables you can buy!"

**Heather Rowell**

## Customize your table with these upgrades...

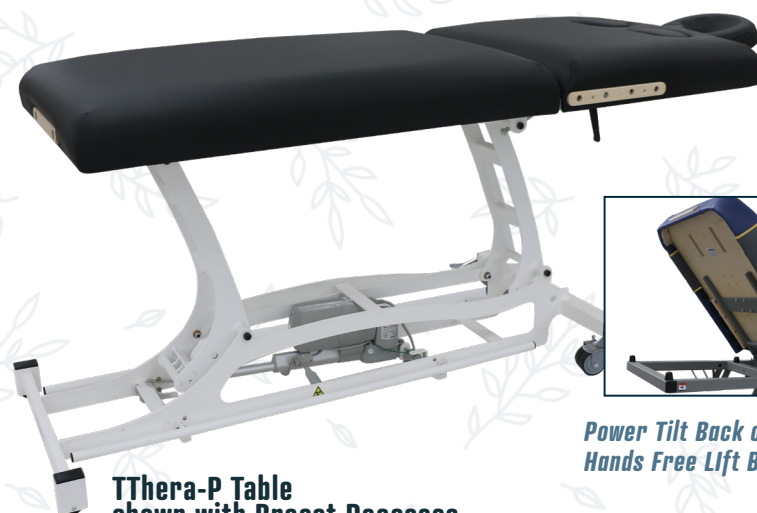
- True Touch Upholstery
- True Touch Upholstery with Touch Response Memory Foam
- Breast Recesses

*See our website for more available options*

### CLASSIC SERIES UPHOLSTERY CHOICES:



### TRUE TOUCH UPHOLSTERY CHOICES:



**TThera-P Table shown with Breast Recesses**



**Power Tilt Back option (PTB-HF) available on Hands Free Lift Back and Deluxe Tables**





# Classic Series Pro Electric Table

**Basic** - ELPro  
**Lift Back** - TELPro  
**Deluxe** - SELPro

## Standard Features:

- **Lifting capacity:** 550 lbs.
- 28", 30" or 33"W x 73"L x 18-34"H
- Standard single foot pedal
- 3" Deluxe wrap foam
- 9" on center dual-end accessory ports
- Durable precision cut steel base
- Whisper quiet lift system



One of our most popular lines since 2009, the Pro Electric Massage Table offers smooth, silent lift, superior craftsmanship and excellent value. The classic design also includes a dual action face rest and pillow, 3" foam, plus a standard single foot pedal for height adjustment.

*Customize your table with these upgrades...*

- Breast Recesses
- Prenatal Upgrade: Breast Recesses and Belly Cutout with Sling (see pg. 19)

*See our website for more available options*



**Table is ADA compliant**  
(Consult your tax professional  
about eligibility for a Section 44  
ADA Tax Credit)

**ELPro**  
shown with Breast Recesses



## CLASSIC SERIES UPHOLSTERY CHOICES:





# Classic Series

**Basic - EL**  
**Lift Back - TEL**  
**Deluxe - AZ**

## Standard Features:

- **Lifting Capacity:** 550 lbs.
- 28", 30" or 33"W x 73"L x 18-34"H
- Single foot pedal
- 3" Deluxe wrap foam
- 9" on center dual-end accessory ports
- Elegant styling precision cut steel base
- (2) Hidden wheels in stylish wood feet
- Whisper quiet lift system



**Table is ADA compliant**  
 (Consult your tax professional about eligibility for a Section 44 ADA Tax Credit)

## Elegance Electric Table

We combined stability with style in our Elegance Electric Massage Table. Lifting up to 550 lbs. with ease, our powerful motor raises and lowers with just a touch of our standard single foot pedal. It also includes a dual action face rest with pillow for versatility and support. Add breast recesses or prenatal options for even greater client comfort.

This stylish table features wood feet and a modern curve

**EL**  
 shown with  
 Prenatal Option



- True Touch Upholstery
- True Touch Upholstery with Touch Response Memory Foam
- Breast Recesses
- Prenatal Upgrade: Breast Recesses and Belly Cutout with Sling (see pg. 19)

**See our website for more available options**

### CLASSIC SERIES UPHOLSTERY CHOICES:



### TRUE TOUCH UPHOLSTERY CHOICES:



CustomCraftworks.com | 800.627.2387



# Classic Series Majestic Electric Table

Basic - MAJ  
Lift Back - TMAJ  
Deluxe - FLO

## Standard Features:

- **Lifting capacity:** 600 lbs.
- 28", 30" or 33"W x 73"L x 27.5-39.5"H
- Precision cut steel base with column lift pedestal
- 3" Deluxe wrap foam
- 9" on center dual-end accessory ports
- Whisper quiet lift system



FLO

Our Majestic Electric Massage Table offers a sleek and modern columnar design. Clients will appreciate its strength, stability and smooth operation while therapists will approve of the open design and inset base allowing for the ability to maintain ergonomically correct positioning around the table. Ample leg and knee room, 12" height range adjustment and ease of operation is right at the tap of your toe.

*Customize your table with these upgrades...*

## CLASSIC SERIES UPHOLSTERY CHOICES:



## TRUE TOUCH UPHOLSTERY CHOICES:



- True Touch Upholstery
- True Touch Upholstery with Touch Response Memory Foam
- Breast Recesses

*See our website for more available options*



## Power Lift Back A MUST HAVE

The Power Lift Back upgrade is available on select Lift Back and Deluxe models. This option allows you to quietly and securely move your clients between flat and seated positions while they remain on the table! This upgrade comes standard with hand control.



# Classic Series McKenzie Electric Table

Basic - MK

Lift Back - TMK

Deluxe - YK

## Standard Features:

- **Lifting Capacity:** 400 lbs.
- 28", 30" or 33"W x 73"L x 19-38"H
- Precision cut steel base
- Retractable wheels
- 3" Deluxe wrap foam
- 9" on center dual end accessory ports
- Whisper quiet lift system

The McKenzie Electric Massage Table raises smoothly and effortlessly from 19 to 38 inches. Your clients will feel both comfortable and secure due to rock solid construction - including retractable wheels.



**Table is ADA compliant**  
(Consult your tax professional about eligibility for a Section 44 ADA Tax Credit)

*Customize your table with these upgrades...*

- True Touch Upholstery
- True Touch Upholstery with Touch Response Memory Foam
- Breast Recesses

*See our website for more available options*



**TMK**

CustomCraftworks.com | 800.627.2387



										
Table		Height Range	Lifting Capacity	Electric Lift Back Option	Breast Recess Option	Prenatal Option	Touch Response Memory Foam Option	True Touch Upholstery Option	Cabinet	ADA Compliant
	<b>Pro</b>									
	Basic	18-34"	550							
	Lift Back	18-34"	550							
	Deluxe	18-34"	550							
	<b>Elegance</b>									
	Basic	18-34"	550							
	Lift Back	18-34"	550							
	Deluxe	18-34"	550							
	<b>McKenzie</b>									
	Basic	19-38"	400							
	Lift Back	19-38"	400							
	Deluxe	19-38"	400							
	<b>Majestic</b>									
	Basic	27.5-39"	600							
	Lift Back	27.5-39"	600							
	Deluxe	27.5-39"	600							
	<b>Hands Free</b>									
	Basic	17-35"	650							
	Lift Back	17-35"	650							
	Deluxe	17-35"	650							
	<b>Spa Series Hands Free</b>									
	Basic	17-35"	650					Included		
	Lift Back	17-35"	650					Included		
	Deluxe	17-35"	650					Included		
	<b>M100</b>									
	Basic	27-34"	550							
	Lift Back	27-34"	550							
	Deluxe	27-34"	550							
	<b>ErgoSpa</b>									
	Basic	20-30"	450							
	Lift Back	20-30"	450							
	Deluxe	20-30"	450							

What comes with each Classic Series Electric Table?



Basic: Dual Action Face Rest and Crescent Pillow



Lift Back: Dual Action Face Rest, Crescent Pillow, Holes for Swivel Side Arm Supports



Deluxe: Dual Action Face Rest, Head and Neck Pillow, Side Arm Holes and Swivel Side Arm Supports



*Solution Series Luxor Table  
Northwest Career College, Las Vegas*



## *Portable Massage Tables*

Solution Series Companion Portable Table



The Luxor Table features 3/4" memory foam and ultra-soft face cushion!

## Luxor Table

19359

### Standard Features:

- **Load capacity:** 550 lbs.
- 30"W x 73"L x 24-34"
- **Table weight:** 35 lbs.
- Rounded corners
- 3" Multi-layer foam with 3/4" memory foam
- 8" on center dual-end accessory ports

#### SOLUTION UPHOLSTERY CHOICES:



Chocolate

Otter

Charcoal



Agate Blue

Black

Beige



Navy

Purple

The Luxor portable massage table was designed based on your feedback. It caters to your clients with luxurious premium features, such as a 3" foam featuring 3/4" memory foam and an ultra-soft face cushion. Even better, it's affordable. The Luxor model includes the Solutions classic adjustable face rest with deluxe memory foam pillow, carry case, and patented front arm shelf.

## *Solution Series* Luxor Table



### Choosing your FIRST TABLE

You've graduated, gotten your license, and want to start your practice. What do you really need to get your business off the ground?

- Look for a height range and width that fits your frame and the type of work that you will be doing.
- Make sure the face cradle is highly adjustable as it is one of the best ways to make sure your clients are comfortable.

# Solution Series

## Heritage Table

The Heritage table offers rounded corners, dual knobs, a strong and flat working surface, and ergonomically designed Reiki end panels. The Heritage also provides ample working space for mobility all around the table.



This feature filled table is an unbelievable value and the **#1 choice among schools.**



### Add a bolster!

See page 29 for more accessories

### Heritage Table

19301

#### Standard Features:

- **Load capacity:** 550 lbs.
- 30"W x 73"L x 23-34"
- **Table weight:** 35 lbs.
- Rounded corners
- 3" Multi-layer foam



#### SOLUTIONS UPHOLSTERY CHOICES:



CustomCraftworks.com | 800.627.2387



## Why Choose

### *Solution Series*

#### Portable Tables?

#### Standard features of the wood portable tables:

- **In stock and ready to ship**
- Shiatsu release cables
- Solid beech wood frame
- Dual knobs
- Reiki end panels
- 8" on center dual-end accessory ports

#### Tables include:

Classic adjustable face rest with crescent pillow, front arm shelf & carry case

**Using Shiatsu release cables, these tables can easily lay flat on the floor.**



## Destiny Lift Back Table

19302

#### Standard Features:

- **Load capacity:** 450 lbs.
- 30"W x 73"L x 23-32"
- **Table weight:** 43 lbs.
- Rounded corners
- 2.5" Multi-layer foam

Our most affordable lift back portable massage table, the Destiny table delivers multipurpose performance and accommodates all forms of traditional massage as well as reflexology, facials, and waxing.

Esthetician's  
favorite!



See pg. 24 for more  
Spa Series tables, trolley  
carts and accessories



#### SOLUTION UPHOLSTERY CHOICES:



## *Solution Series* Companion Table

## Companion Table

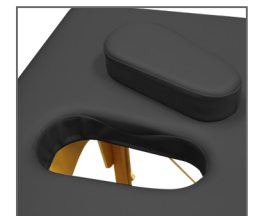
19409

#### Standard Features:

- **Load capacity:** 400 lbs.
- 28"W x 73"L x 23-32"
- **Table weight:** 30 lbs.
- Nose hole and plug
- 2" Multi-layer foam

The Companion table offers a strong and flat working surface and Reiki end panels on each end, increasing mobility all around the table. With the Shiatsu release cables, this table can easily lay flat on the floor. This feature filled table is an unbelievable value.

This table is 28" wide and only 30 lbs.!  
Perfect for events, rentals and massage  
therapists on the go!



#### SOLUTION UPHOLSTERY CHOICES:





## FMST Tools

### Fluid Motion Soft Tissue Tools

Most massage therapists work by themselves either in a mobile setting, private office, fitness centers, chiropractic offices, hospitals or spas. The biggest concern in the profession is wear and tear on the therapist's body. Manual techniques many times put the therapist in an awkward position to perform work on an area of the patient. The Fluid Motion Soft Tissue Tools have been designed to increase efficiency for the practitioner and the massage therapy business. Many therapists are trained and would rather use their hands, but the FMST Tools can also be helpful for the massage therapist to achieve great results by identifying primary tissue restrictions and decreasing wear and tear on the hands and body of the therapist.

**Ambidextrous design and multiple edges for all areas of the body.**

## Solution Series Challenger Aluminum Massage Table

**RUGGED yet  
lightweight  
and functional**



### Challenger Aluminum Massage Table

19391

#### Standard Features:

- **Load capacity:** 600 lbs.
- **30"W x 73"L x 24-33"**
- **Table weight:** 30 lbs.
- Rounded corners
- 3" Multi-layer foam

The portable Challenger Aluminum Massage Table offers an aluminum frame with finger-joint craftsmanship and auto-hold hinge system. It will become the only table you want to travel with!

### Perfect for **SPORTS MASSAGE**

For most of us, massage is the ultimate therapeutic treat that we indulge in once a month or so. To a professional athlete, massage therapy is an everyday and on-the-field essential. **According to AMTA, research shows that massage benefits for pro athletes (or you) include:**

- Reduce muscle tension
- Help athletes monitor muscle tone
- Promote relaxation
- Increase range of motion
- Decrease muscle stiffness and soreness after exercise
- Enhance athletic performance
- Help prevent injuries when massage is received regularly





PEK HER

## Practice Essentials Kits

**Building your practice has never been so affordable.**

- Custom Craftworks Solutions - Heritage Table Kit (shown) PEK HER
- Custom Craftworks Solutions - Destiny Lift Back Table Kit PEK DES
- Custom Craftworks Solutions - Luxor Table Kit PEK LUX
- Custom Craftworks Solutions - Challenger Table Kit PEK CHA

The Practice Essentials Kits combine our most popular items, including one of our high-quality Solution Series tables, front arm sling, carry case, classic adjustable face rest with cushion, round bolster, oil holster, 8 oz. Sacred Earth Botanicals massage lotion, three-piece sheet set (flat, fitted and face rest cover), 3-pack cotton flannel face rest cover (white), and our exclusive under-table shelf for storage.



BBK LUX

## Business Basics Kits

**For therapists utilizing both table and chair techniques.**

- Custom Craftworks Solutions - Heritage Table Kit BBK HER
- Custom Craftworks Solutions - Destiny Lift Back Table Kit BBK DES
- Custom Craftworks Solutions - Luxor Table Kit (shown) BBK LUX
- Custom Craftworks Solutions - Challenger Table Kit BBK CHA

Start your business with the basics. Our Business Basics Kits combine our affordable and feature-rich portable tables with a massage chair and other add-ons. The Business Basics Kits include one of our high quality Solution Series tables with carry case, front arm sling, classic adjustable face rest, a Melody Massage Chair with carry case, wooden folding stool, round bolster, oil/lotion holster with an 8 oz. bottle of Sacred Earth Botanicals massage lotion and 25 disposable fitted face rest covers (white spunbound fabric).



## Massage Table Kits

### SOLUTION UPHOLSTERY CHOICES:





## *Solution Series* SideKick Portable Desktop Unit

Our ultra-portable SideKick Portable Desktop Unit is ideal for corporate massage sessions, eye surgery recovery, and hospital seated massage. Carry case included.

### SideKick Portable Desktop Unit

19312

#### Standard Features:

- **Load capacity:** 300 lbs.
- 42"L x 11"W x 20"H
- 2" Fire retardant foam
- Adjustable chest pad and head rest
- Carry case with strap

#### SOLUTION UPHOLSTERY CHOICES:



Black Navy



**Only 18  
lbs.**

## *Solution Series* Melody Portable Massage Chair

The Melody Massage Chair is ergonomically designed to offer maximum comfort to both client and practitioner. Sets up in seconds and folds for easy transport and storage. The flexibility of arm height and angle adjustments, an adjustable chest pad, removable sternum pad, adjustable headrest and seat height and angle adjustments help match your working height and fit your client perfectly. The Melody Massage Chair includes a carry case with strap, adjustable chest pad, removable sternum pad, eyeglass/jewelry pouch, and 2" fire retardant foam.

### Melody Portable Massage Chair

19309

#### Standard Features:

- **Load capacity:** 300 lbs.
- 17.5"W x 50"L x 44.5"H
- **Table weight:** 18 lbs.
- Seat height and angle adjustments
- Adjustable chest pad and head rest
- Removable sternum pillow

#### SOLUTION UPHOLSTERY CHOICES:



Chocolate Otter Charcoal Navy  
Agate Black Beige Purple

CustomCraftworks.com | 800.627.2387



# Solution Series

## Cadence Portable Massage Chair

19416

### Standard Features:

- Load capacity: 600 lbs.
- 26.5"L x 15"W x 35"H
- Folded dimensions : 25"W x 15"W x 14"H
- Table weight: 24 lbs.
- Adjustable & removable face cradle
- Infinitely adjustable chest bolster
- Arm height and angle adjustments
- Adjustable seat cushion
- 2" Memory foam
- Carry case with wheels included

## Cadence Portable Massage Chair

The Cadence Portable Massage chair is an investment that can enhance your massage therapy practice by providing a convenient, comfortable, and relaxing massage experience on the go for your clients. The flexibility of arm height and angle adjustments, an adjustable chest pad, removable sternum pad, adjustable headrest and seat height matches your working height and fits your client perfectly.



### SOLUTION UPHOLSTERY CHOICES:



Agate Black Charcoal Navy

# Classic Series

## Athena Table

AT

### Standard Features:

- **Load capacity:** 650 lbs.
- 28" or 30"W x 73"L x 25-35"H
- **Table weight:** 31 lbs. for 28", 34 lbs. for 30"
- Shiatsu release cables
- 9" on center dual-end accessory ports
- Reiki end panels on both ends
- 3" Multi-layer foam

Face rest holes on both ends for convenience



**Interested in Prenatal Upgrades?**

See pg. 19 for more information

# Athena Table

We credit the popularity of this table to its fully customizable and professional design, which helps you feel fresher at the end of the day while still giving clients the massage you intend. Built from premium materials, including North American hard rock maple, American poplar, birch and aircraft-quality cables, this table's unmatched craftsmanship is full of thoughtful, therapist-friendly details.

*Customize your table with these upgrades...*

- True Touch Upholstery
- True Touch Upholstery with Touch Response Memory Foam
- Rounded Corners
- Breast Recesses
- Prenatal Upgrade: Breast Recesses and Belly Cutout with Sling (see pg. 19)

**More therapists choose the Athena Portable Table than any other table.**

*See our website for more available options*



### CLASSIC SERIES UPHOLSTERY CHOICES:



### TRUE TOUCH UPHOLSTERY CHOICES:

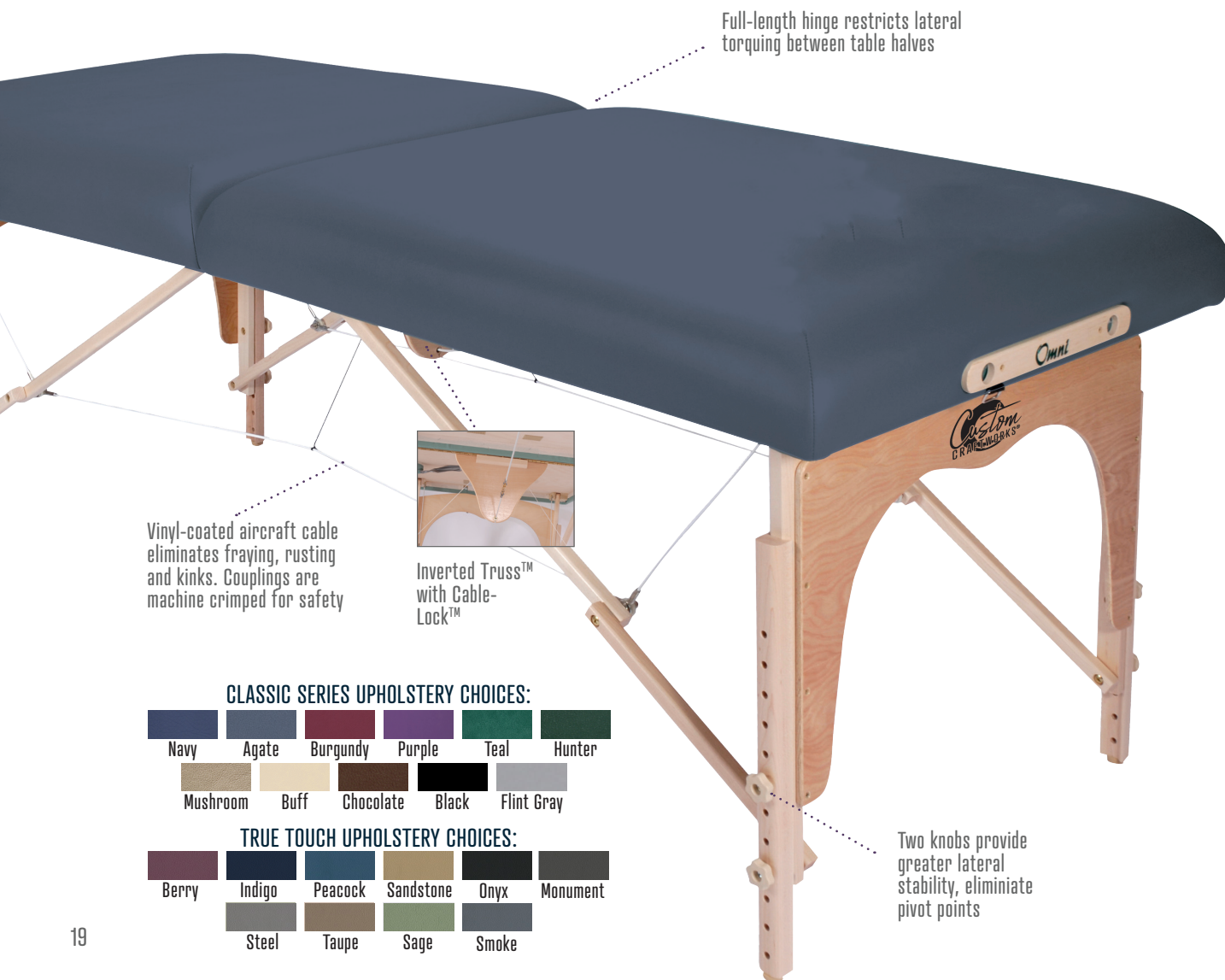




# Classic Series Omni Table

Our extra-strong, and still easily portable, Omni massage table provides stable support for your most vigorous deep tissue body work and sports massage. Tested to 800 pounds, the Omni's superior construction features extra-rigid birch for strength and flex-resistance. Our combination Inverted Truss and Cable-Lock systems give you additional stability and support at all points.

The best portable table for deep  
tissue body work.



## Omni Table

OM

### Standard Features:

**Load capacity:** 800 lbs.

28" or 30"W x 73"L x 25-35"H

Table weight: 34 lbs. for 28",

37 lbs. for 30"

Shiatsu release cables

9" on center dual-end accessory ports

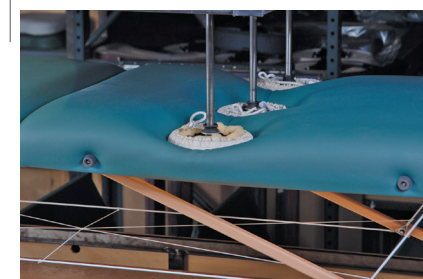
Reiki end panels

3" Multi-layer foam

## Customize your table...

- True Touch Upholstery
- True Touch Upholstery with Touch Response Memory Foam
- Rounded Corners
- Breast Recesses
- Prenatal Upgrade: Breast Recesses and Belly Cutout with Sling (see pg. 19)

*See our website for more available options*



Tested to 800 lbs.!

CustomCraftworks.com | 800.627.2387

## Table Packages

### Essential Package



#### Athena Essential Package

Essential AT

- Classic Series Athena or Omni
- 9" Dual action face rest with pillow
- Deluxe 3-pocket carry case



#### Omni Essential Package

Essential OM

### Professional Package

- Classic Series Athena or Omni
- 9" Dual action face rest with pillow
- Classic Series round ankle/knee bolster



#### Athena Professional Package

Professional AT

- Classic Series arm rest shelf
- Under-table shelf
- Classic Series rolling stool
- Deluxe 3-pocket carry case



#### Omni Professional Package

Professional OM



### Providing innovative options for PRENATAL MASSAGE



Massage for expecting mothers can be a great way to expand your services with the correct training, certifications and equipment. We understand the importance of client safety and comfort and created a reliable and supportive solution for pregnant massage clients. After extensive research and development with nurse-midwives, massage therapists and engineers, we developed an innovative prenatal and breast recess massage table option that has been available since 2000.



#### Breast Recess Upgrade

Available on select Classic Series Massage Tables



#### Prenatal Upgrade

Available on select Classic Series Massage Tables

Visit our website for more information and education on prenatal massage  
**CustomCraftworks.com**



## Classic Series Feldenkrais Table

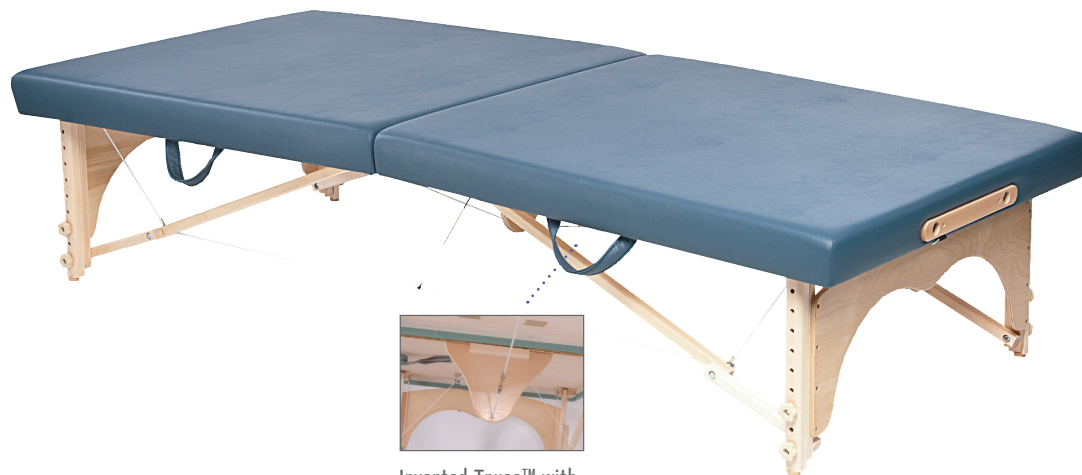
The Feldenkrais method demands an ultra-strong and stable surface for practitioners—and the Feldenkrais portable massage table delivers. Designed, tested and proven by leading Feldenkrais trainers, special features include a firm 1 inch foam, Inverted Truss system with Cable Lock for tremendous lateral stability combined with snap-open ease of use, and standard low-height range (17 to 25 inches). Our exclusive design is one of the industry's best-selling specialty tables and easily withstands the rigors and movements unique to the Feldenkrais method. Face rest and carry case sold separately.

### Feldenkrais Table

FK-3003-73 H0

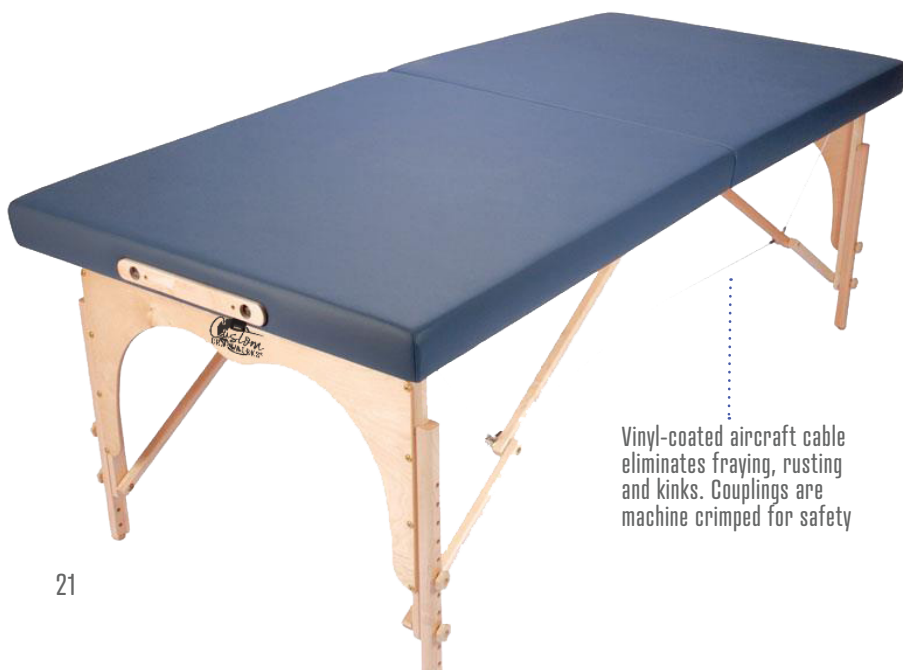
#### Standard Features:

- **Load capacity:** 800 lbs.
- 30"W x 73" or 78"L x 17-25"H
- **Table weight:** 41 lbs.
- 9" on center dual-end accessory ports
- 1" Semi-firm foam



Inverted Truss™ with  
Cable-Lock™

## Classic Series Alexander Table



Vinyl-coated aircraft cable  
eliminates fraying, rusting  
and kinks. Couplings are  
machine crimped for safety

### Alexander Table

FK-3003-73

#### Standard Features:

- **Load capacity:** 800 lbs.
- 30"W x 73" or 78"L x 24-34"
- **Table weight:** 41 lbs.
- 9" on center dual-end accessory ports
- 1" Semi-firm foam

The firm, flat surface of this table is ideal for use during Alexander lessons. Larger width and length options allow the student to feel confident on the table, while the 24-34" height range makes for a more comfortable stance for the teacher. The design complements most decor and comes in a variety of on trend colors. Table folds in half for compact storage. Tested to 800 pounds, our superior construction features extra-rigid birch for strength and flex-resistance. Our combination Inverted Truss and Cable Lock systems provide additional stability and support at all points. Face rest and carry case sold separately.



Northwest Career College - Nevada



*Back by popular demand*  
Classic Series Taj  
Mahal now available!

*Stationary Tables*



## Aura Table

Basic 19337

Lift Back 19338

Deluxe 19339

### Standard Features:

- **Load Capacity:** 550 lbs.
- 30"W x 72"L x 24-33"H
- Rounded corners
- Solid beech wood frame
- 3.5" Multi-layer foam
- 8" on center dual-end accessory ports
- Rounded corners
- Open shelf storage
- Interlocking legs
- **Table includes:** Solutions classic adjustable face rest with crescent pillow, front arm sling, and ankle extension

## Aura Table

Its classic design includes a solid beech wood frame, easy-to-access storage shelf, adjustable height (24 to 33 inches), rounded corners for ease of movement and 3.5" multi-layer foam. Some assembly required.

**Accessories shown are included with your table!**

**Looking for a stationary massage table with all the features you need?**

**The Aura Table delivers.**



### AURA UPHOLSTERY CHOICES:





# Taj Mahal

The Taj Mahal has a simple and elegant design that complements massage therapy offices, spas, and salons. Customize your table to suit your needs. The Taj Mahal can be upgraded with an enclosed cabinet, breast recesses, Touch Response Foam and more!

Choose from a fixed height of 28" or 30" or a manually adjustable table ranging from 26-38"H.



## Standard Features:

- **Load capacity:** 800 lbs.
- 30"W x 73"L
- Solid maple wood frame
- H-Brace construction
- Dual knobs
- 9" on center dual-end accessory ports
- 3" Multi-layer foam

*Customize your table with these upgrades...*

- True Touch Upholstery
- True Touch Upholstery with Touch Response Memory Foam
- Rounded Corners
- Breast Recesses
- Cabinet

## CLASSIC SERIES UPHOLSTERY CHOICES:



## TRUE TOUCH UPHOLSTERY CHOICES:







”

The best thing about this table are some of the features that it has. I'm an older massage therapist, so anything to help me with my lower body mechanics, helps me to continue working as pain free as possible.

This is a huge goal for me.

This table can be lowered and it can be raised - so if I push down on it, it goes up. I can access that bar from anywhere around the table. I don't have to be in a specific location to do that. This table is great - it can lower all the way down, so accessibility from a wheelchair is a real plus for people who can't get on it from a certain height - I can match the height that they need. Thanks for being a great company to purchase from!

Cindy Koppatschek, LMT  
Cindy's Therapeutic Massage, South Dakota

## Why Choose the *Spa Series* Hands Free?

### **Spa Series branded panels**

(ask about custom branding with your logo)

**True Touch Upholstery and our custom gray powder coat base come standard on this table**

# *Spa Series*



**Power Tilt Back option (PTB-HF) available on Spa Hands Free Lift Back and Deluxe Tables**



# Spa Series Hands Free Electric Table

The elegant design of our Spa Series Hands Free Basic Electric Table is ideal for spas or practices where style is as important as function. The custom gray base and design plates offer a sleek alternative to our classic base. The elegant foot bars along each side allow therapists to move freely around the table for a more fluid client experience.



SThera-P-3007-SS



**Table is ADA compliant**  
(Consult your tax professional  
about eligibility for a Section 44  
ADA Tax Credit)

## TRUE TOUCH UPHOLSTERY CHOICES:



Available in Basic, Lift Back  
and Deluxe configurations



**Basic** - TThera-P-3007-SS

**Lift Back** - TThera-P-3007-SS

**Deluxe** - SThera-P-3007-SS

## Standard Features:

- **Load capacity:** 650 lbs.
- 30"W x 73"L x 17-35"
- Whisper quiet lift system
- Steel base with classic gray powder coat
- Hands free dual foot bar control
- 9" on center dual-end accessory ports
- 3" Deluxe wrap foam





# Trolley Carts

The Signature Spa Series Trolley Carts offer attractive storage for your towel warmers, towels, and other treatment essentials. Offered in three configurations, the trolley carts are available in laminate and wood. Customize your wood cart by adding a custom stain color. Each cart comes standard with an open shelf, a 2" hole with grommet for cords, and 2" locking swivel casters. Towel warmers sold separately.

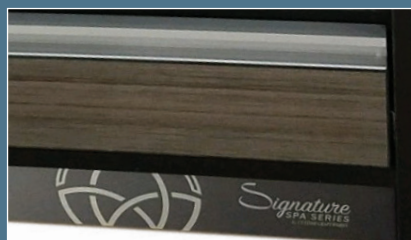
## LAMINATE COLOR CHOICES:



## WOOD COLOR CHOICES:



## STAIN CHOICES:



**T100 -**  
20"W x 20"D x 33"H

**T200 -**  
20"W x 20"D x 40"H

**T300 -**  
20"W x 20"D x 40"H



T100



T200



T300

# Trolley Carts

**T100 - 1 Drawer**

**T200 - Two Drawers**

**T300 - Three Drawers**

## Standard Features:

- Glue and dowel construction
- Available in laminate and wood
- Open storage
- 2" Hole with grommet for cords
- 2" Locking swivel casters



Our Towel Warmers fit nicely in  
or on top of our Trolley Carts

See pg. 28

# Accessories



**19356**  
6 Quart Stone Heater  
(includes wooden spoon)

Digital Control



**19398**  
Massage Oil and Lotion Warmer  
Bottle included



**19378 (45 piece)**  
Hot Stone Set with Cool Stones



**19395**  
Deluxe Electric Warmer Pad (29.5" x 73")

## Towel Warmers



**19346**  
Outside dimensions:  
18"W x 12"D x 14"H  
Inside dimensions:  
15"W x 8"D x 10"H



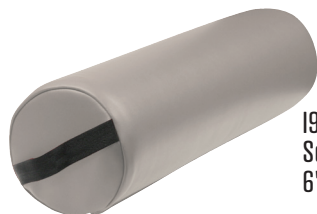
**19347**  
Outside dimensions:  
16.25"W x 17.5"D x 18"H  
Inside dimensions:  
(2) 13"W x 12.5"D x 5.75"H sections

Our Towel Warmers have a rust-proof aluminum interior that maintains an internal temperature of 158-176° Fahrenheit. The warmer comes with a condensation collector tray to remove excess moisture. The silicon door seal is ideal for heat retention and quiet operation.

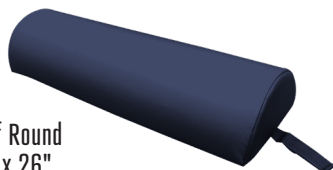




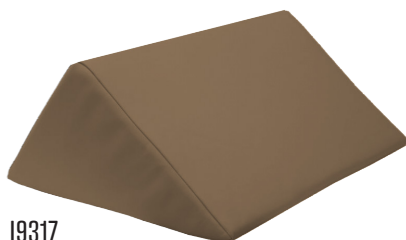
# BOLSTERS



19315  
Series Round Bolster  
6" x 26"



19336  
Series Half Round  
Bolster 4" x 26"



19317  
Series Triangle Bolster  
16"W x 27"L x 12"H



Classic Series  
Round Bolsters  
Ankle/Knee  
Bolster

BOL Ank 6" x 27"  
BOL Kn 8" x 27"



BOL H4  
Classic Series Half  
Round Bolster  
4" x 27"

# Extensions & Armrests



19331  
Solution  
series Hanging  
Armrest



ARST  
Classic  
Series  
Armrest  
Shelf



19323  
Solution Arm  
Extensions



BOL BSE  
Classic Series  
Bolster  
Side Arm  
Extensions



SLD  
Classic Series  
Sliding  
Side Arm Extensions  
(table must have  
side arm holes)



10" Classic Series  
Foot Extension  
**FEX 28**  
28" wide  
**FEX 30**  
30" wide

## Solution Series Stools



Solution Series  
Rolling Stool  
With Back  
19310



Solution Series  
Folding Stool  
19311



Solution Series  
Rolling Stool  
19332



Solution Series Medical  
Rolling Stool  
19413



Classic Series  
Rolling Stool  
RS



Classic Series  
Medical  
Rolling Stool  
MRS

## Classic Series Stools



**Best Seller!**  
**CEBL-1001**  
Omni Cervical Relief Pillow

## Accessories

# Choosing the Best Face Rest



What Custom Craftworks face rest is right for you?



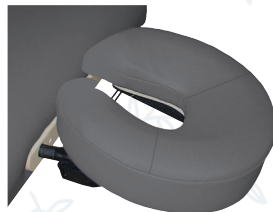
19320  
Classic  
Adjustable Face Rest  
Base Only (8" on center)



CR-Pill  
Classic Series Crescent Pillow



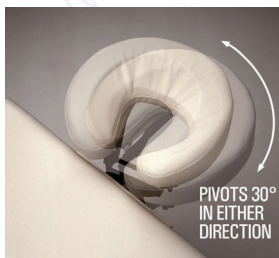
POS-B  
Dual Action Face Rest  
Base Only (9" on center)



POS  
Dual Action Adjustable Face Rest  
with Pillow (9" on center)



PPOS-B  
Pivot Posi-Tilt Face Rest  
Base Only (9" on center)



PPOS  
Pivot Posi-Tilt Face Rest with  
Pillow (9" on center)

## Best Seller!



DPOS-B  
Deluxe Adjustable Face Rest  
Base Only (9" on center)



DPOS  
Wooden Deluxe Adjustable  
Face Rest with Pillow  
(9" on center)



UTS28-30 Under Table Shelf  
(fits 28" or 30" x 73" standard tables)

UTS33 Under Table Shelf  
(fits 33" x 73" standard tables)

\*Does not fit Challenger Aluminum Table

Great for  
events!



FRC 30-50 & CASE  
Sani-Covers (50 per Box, 18 Boxes per Case — White)



OHD+PB  
Double Oil/Lotion  
Holster  
with 2 BPA-free pump  
bottles  
(cream jar not  
included)

OHS+PB  
Single Oil/Lotion  
Holster  
with 1 BPA-free  
pump bottle  
(available in black  
or purple)

## Travel with your table



CA-30  
Deluxe 3 Pocket Carry Case  
(with padded shoulder strap)  
Fits 28" & 30" x 73" tables

CAXWXL  
(33" & 36" x 78")  
Specialty Carry Case  
(with padded shoulder strap)  
for oversized tables

19393 Solutions  
Series Table  
Cart (36" x 78"  
tables)



CEBL-1001  
Omni Cervical Relief Pillow



Add to your retail shelf!



Sani-Cover Omni Cervical  
Relief Pillow Disposable  
Covers  
CEC-25 (bag of 100)



# Table Linens



## Deluxe Double Brushed Cotton Flannel

Available in: Sage, Light Blue, White and Natural

### SHT SET 3pc

Deluxe Double  
Brushed  
Cotton Flannel  
3 Piece  
Sheet Set



### FRC 3PK

Deluxe Double  
Brushed Cotton  
Flannel Face  
Rest Covers  
Pack of 3



## Premium Blend Poly/Cotton

Available in: White and Natural

### SHT SET P/C 3pc

Premium Blend  
Poly/Cotton  
3 Piece  
Sheet Set



### FRC P/C 3PK

Premium Blend  
Poly/Cotton  
Face Rest Covers  
Pack of 3



### PFG-5480

Premium Polar  
Fleece  
Blanket

Available in: Natural, Gray,  
and Chocolate



### BCV 6x28

Cotton Flannel 6"x28"  
Round Bolster Cover

Available in: White and Natural

**Bolsters on pg. 29**





PROFESSIONAL MASSAGE THERAPY & SPA PRODUCTS

## CREMES, LOTIONS, OILS, AND GELS

We will only provide unique products of superior quality for healthcare professionals in the wellness industry. We can make this promise because of our company's total commitment to innovation and ongoing research and development. Furthermore, our dedication to customer service is absolute. Our goal is to satisfy your professional "wants" as well as your "needs," and we will do whatever it takes to formulate products that meet your exacting specifications.

Visit [customcraftworks.com](http://customcraftworks.com)  
for our full line.

Coconut



Featured  
Products

Therapeutic  
Touch



## Smart Step Wellness Mats

Our line of high-performance Wellness Mats deliver the comfortable support you need to help while you work, play or exercise. Each mat features extra-durable construction, non-slip tops and bottoms, and an easy-to-clean, antimicrobial surface.

### Standard Features:

- Unmatched comfort and support
- Gradual edges will never curl
- 99.99% Anti-Microbial
- Non-Slip top and bottom surfaces
- Will not separate, bubble, or delaminate
- ¾" SmartTech™ polyurethane technology
- Perfected and tested for over 10 years
- 10-Year manufacturer's warranty
- Proudly made in the USA





## What are schools SAYING?

"As a massage educator, our school has used Custom Craftworks for years. The products are extremely easy to order, delivered in a timely manner, and in good, working condition. They offer great customer service and are always positive to interact with!"

**Jamie Laird, DSM**  
Iowa School of Beauty



Custom Craftworks is passionate about helping schools and students by subsidizing classroom equipment. We believe students deserve to learn the art of massage utilizing high quality tables, chairs and accessories.

### Check out our available programs:

- Advocate Program
- School Distributor Program
- Tables with Tuition
- School Property Program

## Interested in partnering with us?

Price and service are not all we have to offer you at Custom Craftworks. Our tables have an excellent reputation for being among the highest quality tables in the industry.

### Contact us:

**800.627.2387**

**CustomCraftworks.com**

**sales@customcraftworks.com**

# School Programs



# DID YOU KNOW...



**Did you know that Custom Craftworks is a brand of Pivotal Health Solutions?**

**CREATE  
YOUR  
PIVOTAL  
PRACTICE**

We are continuously developing, evolving and improving products so we can deliver unmatched value to our customers in both product and service. It's our priority to be the difference in providing innovative care solutions. **Shop our other brands:**



## Lockers

Complement your practice with beautiful custom club or phenolic lockers. Designed with high-end finishes for golf and country clubs, health clubs, athletic facilities, fitness centers, resorts and day spas, our club lockers are built with beauty and durability in mind, with custom options to accommodate the needs of any practice.



## Mobile Workstations

Mobile Workstations provide height adjustable work surfaces and allow convenient computer mobility and access. Work surface supports monitors, keyboards, and other supplies. Swivel casters with brakes allow unit mobility and accidental roll prevention.



## Carts & Cabinets

Providing easy accessibility and ample storage space for linens, towels and supplies, our line of cabinets and carts offer multiple options for stylish and versatile storage.



## Treatment Tables

Wood treatment tables are built to meet your needs and your budget. For even greater comfort and accessibility, consider an electric treatment table such as the Thera-P for ease of use and a whisper quiet lift system.



**Be the Difference.**  
pivotalhealthsolutions.com





# WORKER B WELLNESS Minnesota

## A Custom Moment

Rachel Romanelli  
Owner, Worker B Wellness



”

I have been in the massage therapy profession since 1995, and I've used Custom Craftworks since I was a student — that's over 2 decades of using Custom Craftworks tables, bolsters and chairs.

I really appreciate Custom Craftworks in the fact that they've really grown up with our profession and have changed designs to accommodate customers so that they can be comfortable and so practitioners can deliver the best possible service they can. Patients are very impressed with the ability of the table to raise and lower. Having a table that is designed with care in mind makes them feel like they have come to the right place because we have invested in massage equipment that will take care of them.







**JOIN  
&  
SAVE**



**FSMTA**  
Your Source for Success!



Custom Craftworks is proud to partner with these organizations to offer our customers additional discounts. Check out the "Exclusive Discounts" banner on our website for more information.

*A touch above the rest.*

**CustomCraftworks.com | 800.627.2387**

